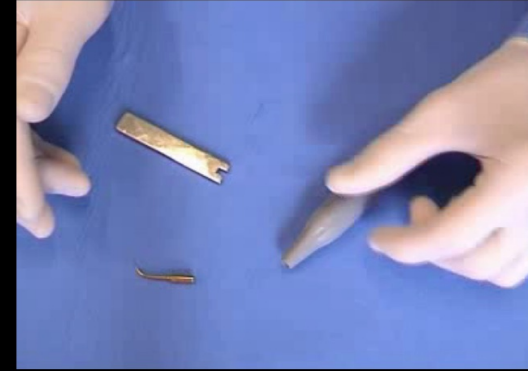


## *Tip adaptation*

Let the water flow out before adapting the tips to eject possible air bubbles (every time the tip is changed)



Magnetostrictives



Secure the tip by a specific key

Piezoelectrics

## *Grasp and rest*

Low pressure to avoid possible iatrogenic damages to hard and soft tissues



Modified pen grasp



As near as possible to the working area

Intra-oral or extra-oral rest



# Periodontal Machine-driven Instruments



## Grasp and rest

Low pressure to avoid possible iatrogenic damages to hard and soft tissues



Modified pen grasp



Intra-oral or extra-oral rest

As near as possible to the working area

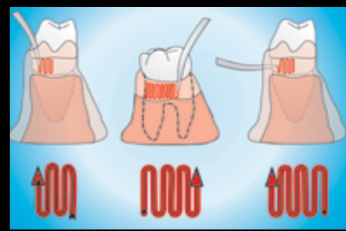


# Periodontal Machine-driven Instruments

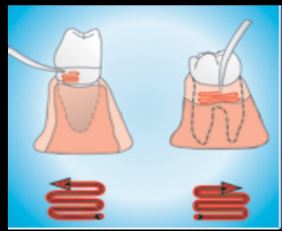


## Instrumentation

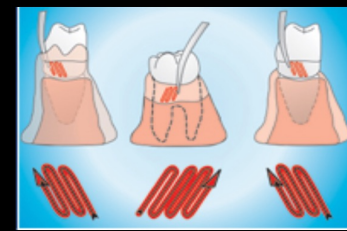
Tip parallel to the tooth long axis



Vertical movements



Horizontal movements



Oblique movements



# Periodontal Machine-drive Instruments

## Activation

Activation must precede instrumentation

No static pressure



# Periodontal Hand Instruments



## Rest and fulcrum techniques

Rest localization

Stable fulcrum

Proper working angulation

Wrist-forearm movement



Wherever possible the rest finger should be closest to the working area

The nearer the fulcrum (to the working area)

The lower the lever arm

Fulcrum





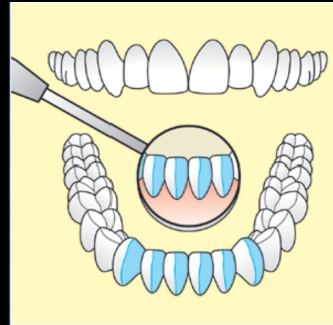
## Patient & Operator position



### ➤ Gracey curette 1-2



➤ 8



- MV-ML surfaces q.4
- DV-DL surfaces q.3

Patient

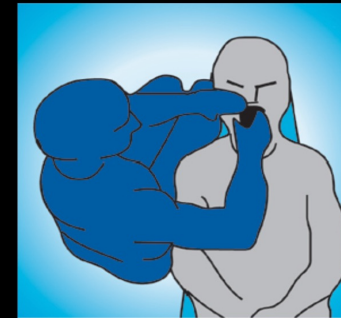
- Head towards operator
- Chin down



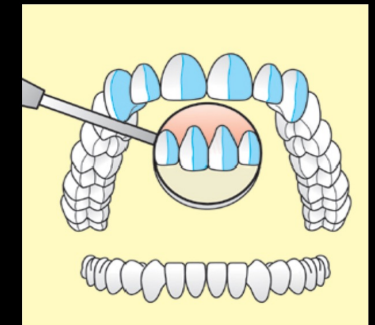
## Patient & Operator position



### ➤ Gracey curette 1-2



➤ 8



- MV-MP surfaces q.1
- DV-DP surfaces q.2

- Head towards operator
- Chin up

➤ 10-11

➤ 12



➤ 9

➤ 8



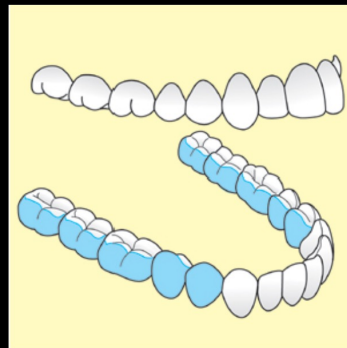
## Patient & Operator position



### ➤ Gracey curettes



➤ 9



- Vest. surfaces q.4
- Ling. surfaces q.3

Patient

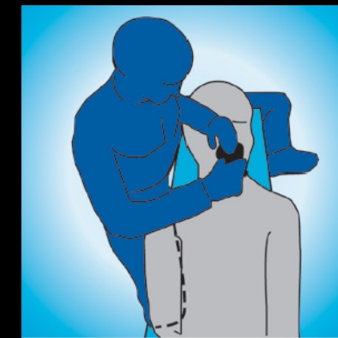
- Head away from operator
- Chin down



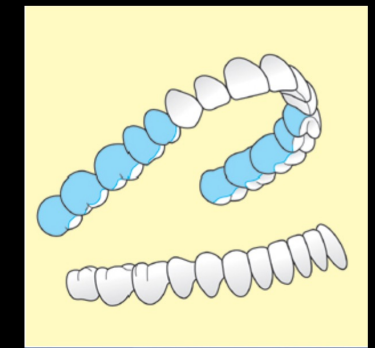
## Patient & Operator position



### ➤ Gracey curettes



➤ 9



- Vest. surfaces q.1
- Palat. surfaces q.2

Patient

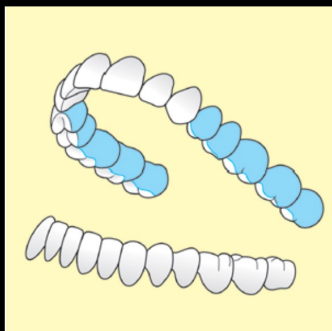
- Head away from operator
- Chin up

# Patient & Operator position



➤ Gracey curettes

➤ 10-11



Patient

- Head towards operator
- Chin up

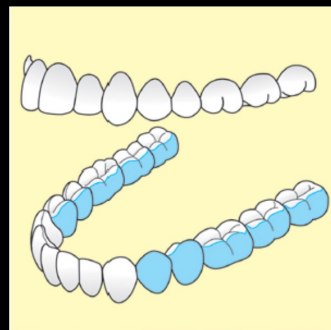
- Vest. surfaces q.2
- Palat. surfaces q.1

# Patient & Operator position



➤ Gracey curettes

➤ 10-11



Patient

- Head towards operator
- Chin down

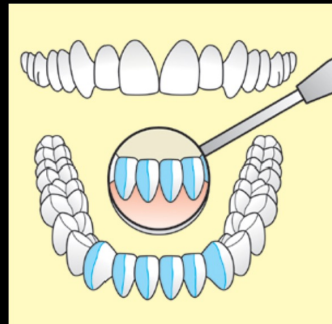
- Vest. surfaces q.3
- Ling. surfaces q.4

# Patient & Operator position



➤ Gracey curettes 1-2

➤ 12



Patient

- Head towards operator
- Chin down

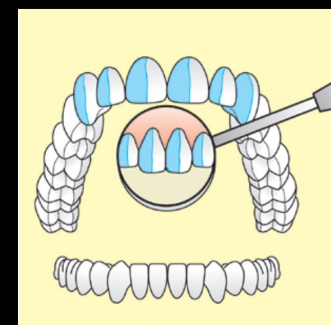
- DV-DL surfaces q.4
- MV-ML surfaces q.3

# Patient & Operator position



➤ Gracey curette 1-2

➤ 12



Patient

- Head towards operator
- Chin up

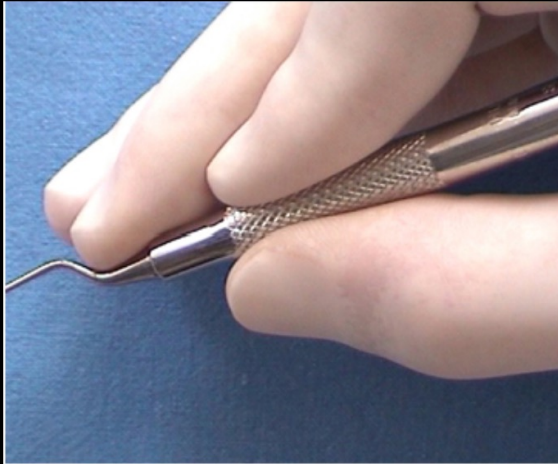
- MV-MP surfaces q.2
- DV-DP surfaces q.1



## *Gracey curettes*

Approach to therapy

3  
Grasp and Rest



## *Gracey curettes*

Approach to therapy

4  
Instrumentation



## Rest and fulcrum techniques

### Rest positions

#### Intra-oral rest

Standard

Modified

Piggy-backed

Cross-arch

Opposite-arch

Finger-on-finger

Handle	Pen-modified grasp
Fulcrum	Ring finger rest
Rest	On a tooth surface, ideally the nearest to the tooth to treat
Position	The same arch of the tooth to treat



## Gracey curettes

### Approach to therapy

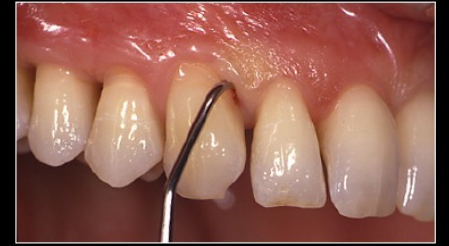
1  
Curette selection

Gracey curettes	Where to use
1-2 and 3-4	Anterior teeth
5-6	Anterior teeth and premolars
7-8 and 9-10	Vestibular and lingual/palatal surfaces of posterior teeth
11-12 and 15-16	Mesial surfaces of posterior teeth
13-14 and 17-18	Distal surfaces of posterior teeth





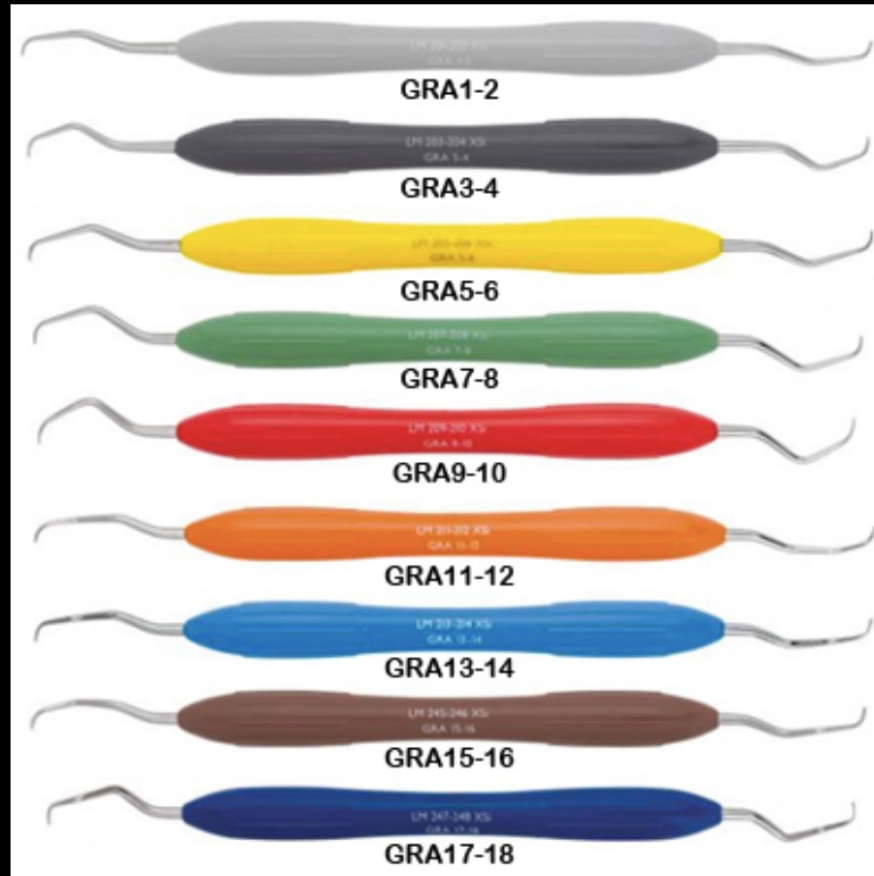
# Periodontal Hand Instruments

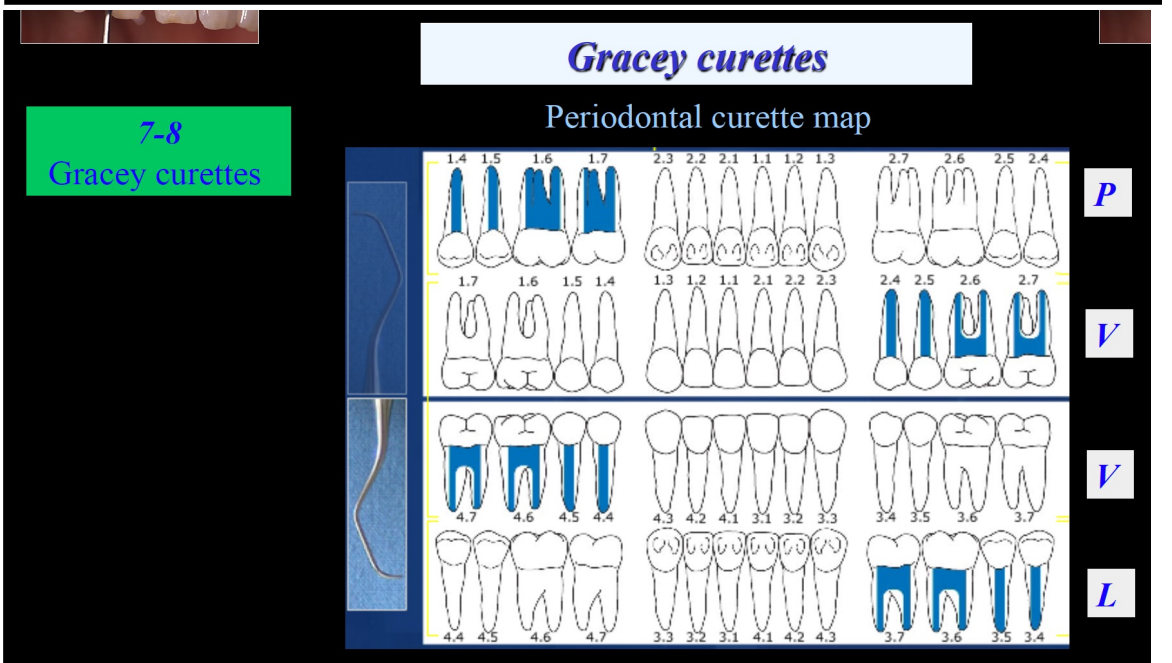
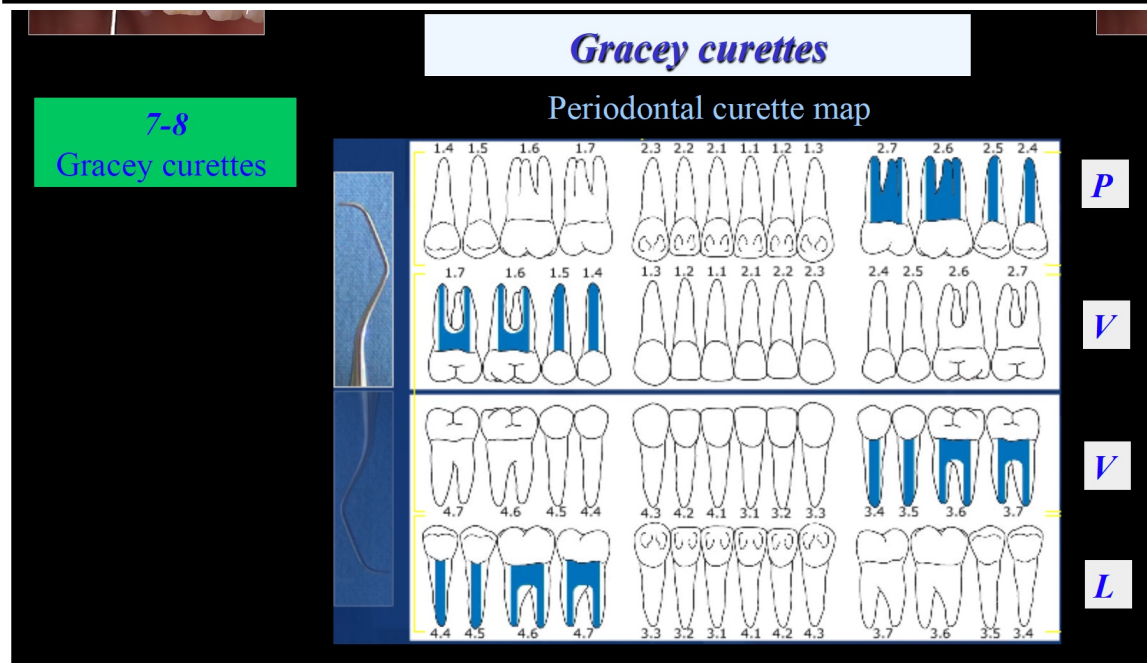
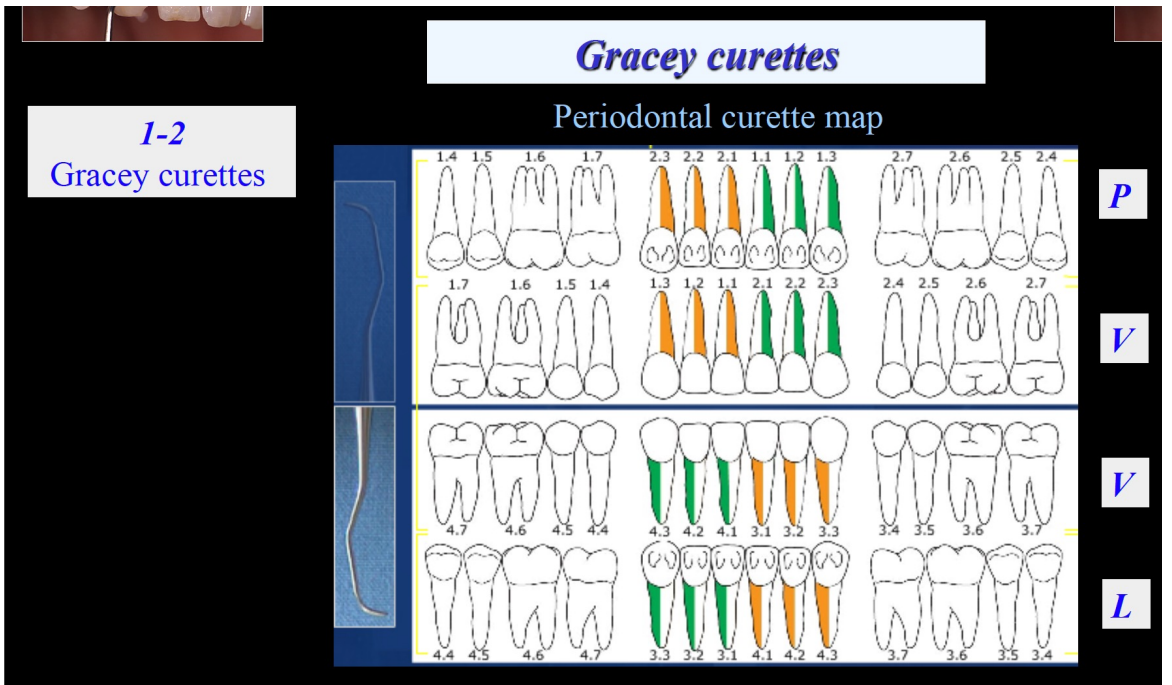
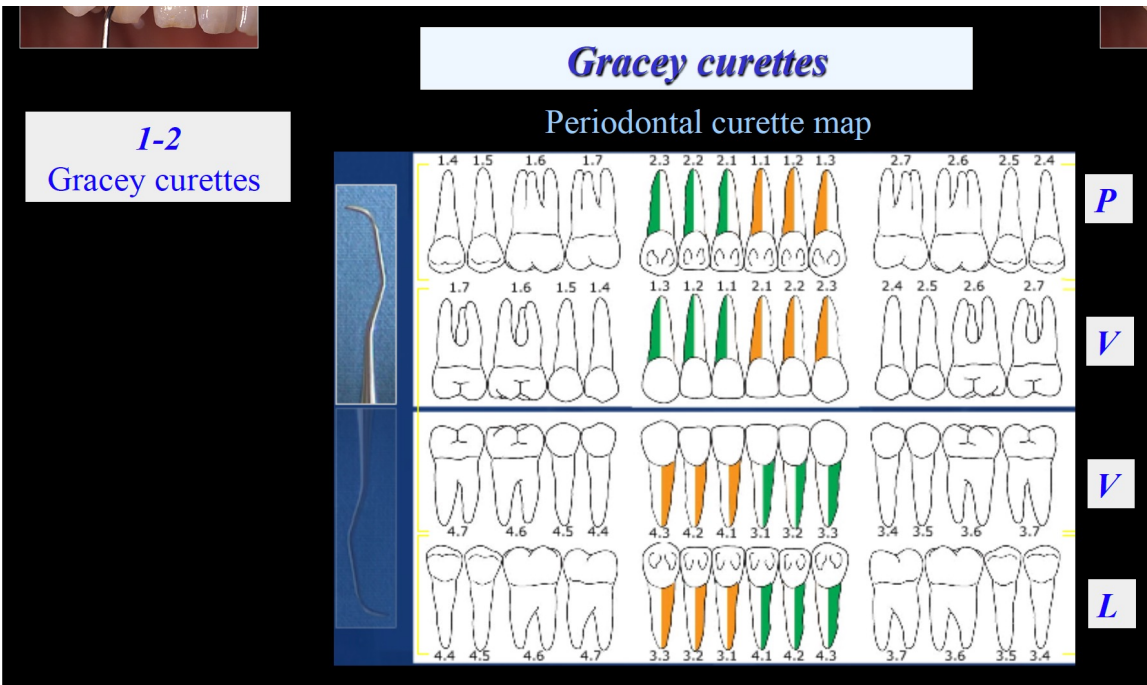


## *Gracey curettes*

Approach to therapy

*1*  
Curette selection







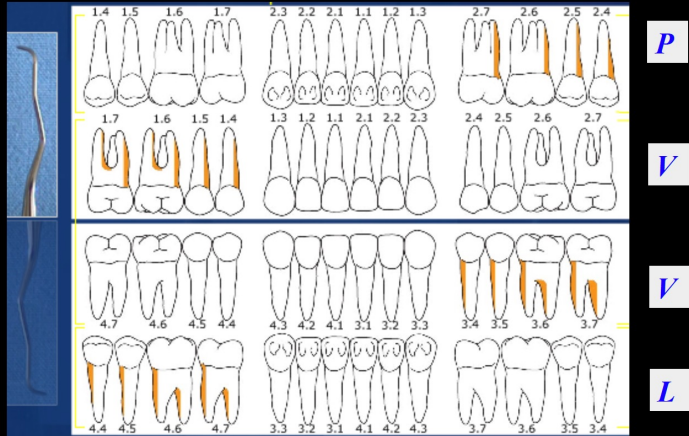
# Periodontal Hand Instruments



## Gracey curettes

11-12  
Gracey curettes

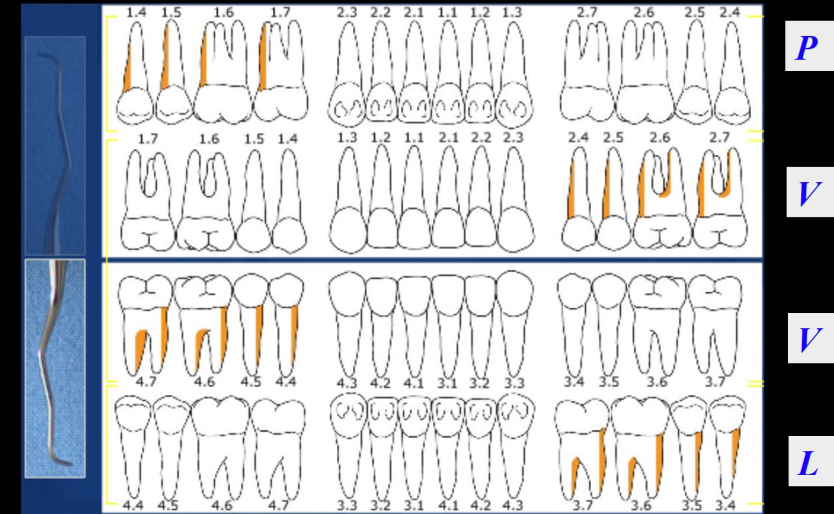
Periodontal curette map



## Gracey curettes

11-12  
Gracey curettes

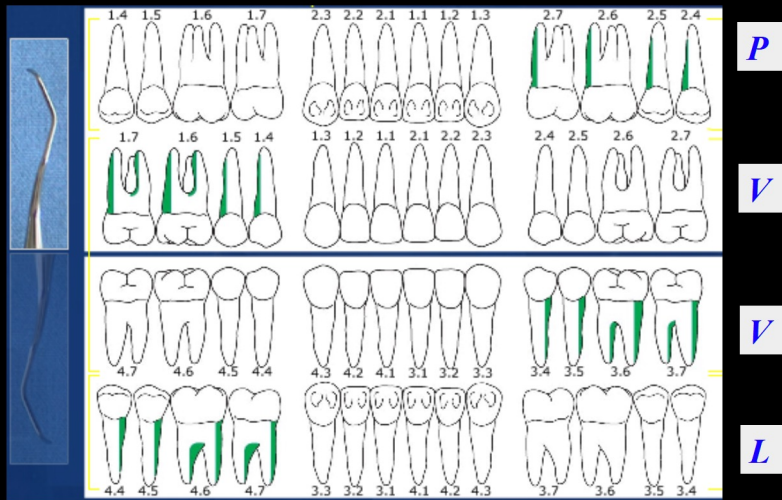
Periodontal curette map



## Gracey curettes

13-14  
Gracey curettes

Periodontal curette map



## Gracey curettes

13-14  
Gracey curettes

Periodontal curette map

